

YEAR 2016

COVERAGE (B) STATION 2401

ROAD NETWORK MINOR

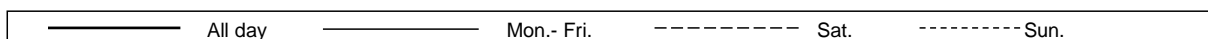
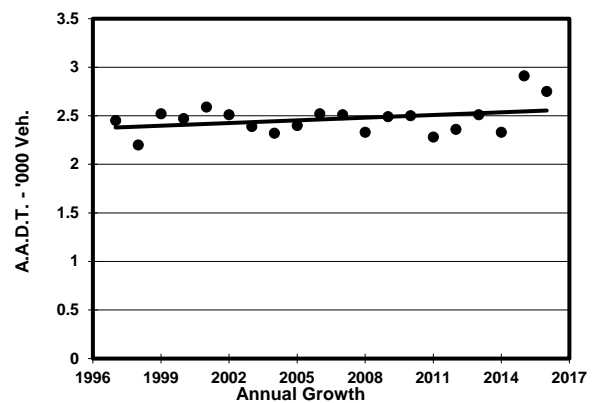
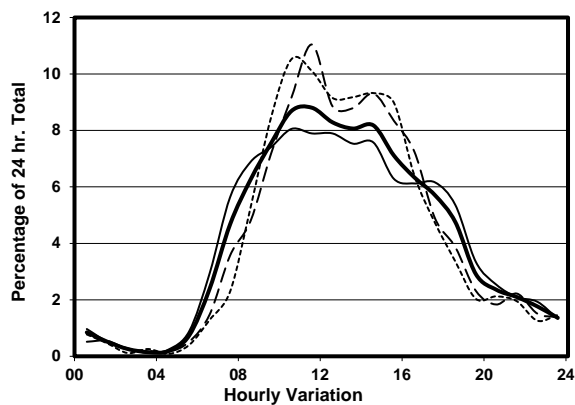
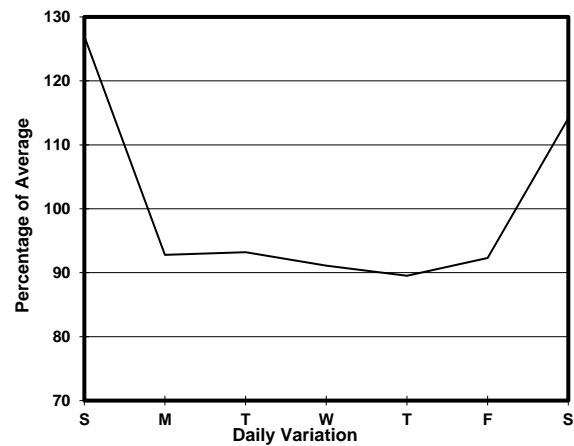
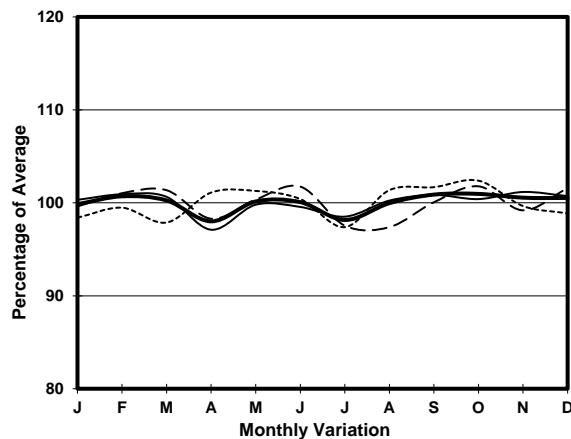
ROAD TYPE LOCAL DISTRIBUTOR

LINK

LIN SHING RD (from WAN TSUI RD to CAPE COLLISION RD)



1. TRAFFIC FLOW VARIATION AND GROWTH



2. TRAFFIC CHARACTERISTICS (BY DIRECTION)

Parameter	All - Day	Mon. - Fri.	Sat.	Sun.
SOUTH BOUND				
A.A.D.T.	2410	2250	2570	2840
R 12 / 24 - %	82.5	81.1	85.2	85.8
R 16 / 24 - %	92.7	92	94	94.4
AM Peak Hour	0900-1000	0900-1000	0900-1000	0900-1000
One-way flow at AM peak hour	180	160	190	260
T - % (AM)	-	15.6	-	-
PM Peak Hour	1600-1700	1700-1800	1600-1700	1600-1700
One-way flow at PM peak hour	150	140	190	160
T - % (PM)	-	3.6	-	-
Prop.of commercial vehicles - 16 hr.	-	12.2	-	-
NORTH BOUND				
A.A.D.T.	340	240	520	600
R 12 / 24 - %	98.5	99.2	96.4	97
R 16 / 24 - %	100	99.6	99.4	98.7
AM Peak Hour	0900-1000	0900-1000	0900-1000	0900-1000
One-way flow at AM peak hour	30	20	40	30
T - % (AM)	-	-	-	-
PM Peak Hour	1600-1700	1600-1700	1600-1700	1600-1700
One-way flow at PM peak hour	30	20	40	60
T - % (PM)	-	-	-	-
Prop.of commercial vehicles - 16 hr.	-	6.5	-	-

3. OTHER INFORMATION AND COMMENT

4. Vehicle classification and occupancy - Monday to Friday

Time		Class of vehicle									
		Motor	Private	Taxi	Private	PLB	Goods veh.		Non	Fr. Bus	
		Cycle	Car		LB		Light	M & H	Fr. Bus	SD	DD
0700-0800	Pro	12.9	12.9	9.7	0.0	12.9	25.8	22.6	3.2	0.0	0.0
	Ocp	1.0	1.0	2.0	0.0	17.0	3.4	1.1	21.0	0.0	0.0
0800-0900	Pro	3.7	33.3	20.4	1.9	11.1	25.9	1.9	1.9	0.0	0.0
	Ocp	1.0	1.6	1.7	6.0	11.7	2.6	3.0	11.0	0.0	0.0
0900-1000	Pro	5.9	15.7	17.6	11.8	7.8	27.5	5.9	7.8	0.0	0.0
	Ocp	1.0	2.0	1.8	4.8	17.0	2.1	1.3	16.0	0.0	0.0
1000-1100 Peak hour	Pro	4.3	27.7	19.1	6.4	6.4	19.1	6.4	10.6	0.0	0.0
	Ocp	1.5	1.7	2.8	6.0	8.3	1.9	1.0	13.6	0.0	0.0
1100-1200	Pro	0.0	37.5	12.5	10.7	3.6	17.9	3.6	14.3	0.0	0.0
	Ocp	0.0	2.6	2.9	3.8	9.0	1.7	1.0	14.8	0.0	0.0
1200-1300	Pro	11.6	23.3	25.6	7.0	4.7	14.0	7.0	7.0	0.0	0.0
	Ocp	1.0	1.2	2.1	2.0	11.0	2.0	1.0	22.7	0.0	0.0
1300-1400	Pro	4.2	25.0	20.8	4.2	4.2	31.3	4.2	6.3	0.0	0.0
	Ocp	1.0	2.1	1.5	2.0	12.5	1.9	2.0	4.3	0.0	0.0
1400-1500	Pro	6.7	44.4	24.4	0.0	4.4	8.9	6.7	4.4	0.0	0.0
	Ocp	1.7	1.5	1.4	0.0	11.5	2.5	1.3	4.0	0.0	0.0
1500-1600	Pro	0.0	31.1	13.3	6.7	8.9	28.9	6.7	4.4	0.0	0.0
	Ocp	0.0	1.3	2.5	5.7	8.3	1.8	1.7	19.0	0.0	0.0
1600-1700	Pro	3.1	34.4	21.9	3.1	15.6	12.5	3.1	6.3	0.0	0.0
	Ocp	1.0	1.3	1.4	1.0	6.0	1.0	1.0	10.5	0.0	0.0
1700-1800	Pro	4.4	53.3	15.6	2.2	8.9	13.3	2.2	0.0	0.0	0.0
	Ocp	1.0	1.6	2.6	1.0	7.3	2.2	1.0	0.0	0.0	0.0
1800-1900	Pro	6.7	43.3	26.7	0.0	6.7	10.0	0.0	6.7	0.0	0.0
	Ocp	1.0	1.5	2.0	0.0	9.0	1.3	0.0	2.5	0.0	0.0
1900-2000	Pro	3.8	73.1	0.0	3.8	7.7	11.5	0.0	0.0	0.0	0.0
	Ocp	1.0	1.7	0.0	1.0	17.0	1.7	0.0	0.0	0.0	0.0
2000-2100	Pro	6.7	46.7	0.0	0.0	13.3	20.0	0.0	13.3	0.0	0.0
	Ocp	1.0	1.4	0.0	0.0	7.5	1.0	0.0	1.0	0.0	0.0
2100-2200	Pro	10.5	47.4	10.5	0.0	10.5	15.8	0.0	5.3	0.0	0.0
	Ocp	1.0	1.1	1.5	0.0	10.0	1.3	0.0	1.0	0.0	0.0
2200-2300	Pro	8.3	25.0	25.0	0.0	16.7	8.3	16.7	0.0	0.0	0.0
	Ocp	1.0	1.3	2.7	0.0	6.5	1.0	3.0	0.0	0.0	0.0
16 hours	Pro	5.2	34.4	17.4	4.5	8.0	19.4	5.2	6.0	0.0	0.0
	Ocp	1.1	1.6	2.0	3.9	10.6	2.0	1.4	12.2	0.0	0.0

Legend

Pro. Proportion of vehicles in % (Sum may not add up to 100% due to figure rounding)*

Ocp. Average occupancy of vehicles including both driver and passengers*

M&H Medium and Heavy

***** All traffic data are collected from combined bounds except for one way traffic